

Walking the pastures at Lazy MC...



Hustle 18T is a unique combination of exciting outcross genetics and solid, predictable, functional Red Angus breed leaders! 70R is a deep made, wedge-shaped female that is now a donor cow for Corner Creek Angus.

We are very pleased with the calves on the ground, and they are averaging 84 lbs at birth. He has put together an enviable track record including: Res. Senior Bull Calf Champion, 2007 WAF Show, Olds, AB; Grand Champion Bull, 2008 Year 2 WAF Show, Olds, AB; Jr. Champion Bull, 2008 Farmfair International.

Watch for Hustle and his progeny at the 2009 World Angus Forum.

Igenity Results:
Tenderness 4/10 Marbling 7/10 Quality Grade 7/10 Yield Grade 7/10 Ribeye 5/10

Red Lazy MC Hustle 18T

CBM 18T 1380931 January 29 2007

RED CRCC BOOM 100N
LAZY MC BOOM 44R
LAZY MC CRISTY 44L

RED LAZY MC SMASH 41N
RED LAZY MC LARKABA 70R
RED LAZY MC LARKABA 60N

EPDS	BW	WW	YW
	2.2	39	69
CARCASS	Milk	TM	
	18	38	
CARCASS	MARB	REA in ²	
	A	13.6	
	BF in	% LMY	
0.37	62.0		

AOD	BW	AWW	AYW	WPDA	CE
2	87	860	1394	3.57	**

Owned with Howe Red Angus



Hustle's dam



Hustle's sire

Thank you to: Anchor 1 Angus, Top End Genetics and Cockburn Red Angus for their semen package purchases. Contact Lazy MC Angus or Howe Red Angus for pricing and availability.



Red RMJ Redman 1T

ROBN 1T 1415715 January 30 2007

RED VGW KING OF THE WEST
RED 5L NORSEMAN KING 2291
RED NORSEMAN 1312 PJM

O C C HUNTER 928H
CROWFOOT KURUBA 4033P
RED CROWFOOT KURUBA 2030M

EPDS	BW	WW	YW
	-0.1	27	49
CARCASS	Milk	TM	
	18	31	
CARCASS	MARB	REA in ²	
	A	13.5	
	BF in	% LMY	
0.27	61.3		

AOD	BW	Oct 10 WT	Jan 14 WT	WPDA	CE
4	84	864	1146	3.14	***

Redman has an exciting group of calves on the ground here at Lazy MC! He was an excellent choice for heifers, and he has worked very well on our "Smash" daughters. He is moderate framed with great muscle shape, good feet and structure. He was used on all our Smash, Boom and Worldwide, daughters along with all our yearling heifers in 2008, and gained weight in the breeding pasture! He will help secure Lazy MC Angus as your leading Outcross Genetics Source! Semen Packages available, thank you to Chapman Cattle Co. for your selection.

Owned with Speargrass Cattle Company



Redman's dam



Redman's sire

Red Lazy MC Remedy 9U

CBM 9U February 04 2008 1470981

RED RINGSTEAD ELIXIR 179P
RED LAZY MC ELIXR 54S
 LAZY MC BESS 4K

RED BROX JIGSAW 35J
RED MS BILTRITE PRIME RIB 1L
 RED MISS SECOND 2 NONE 1H

EPDS	BW	WW	YW
	3	31	47
	Milk	TM	
CARCASS	13	28	
	MARB	REA in ²	
	AA	19.5	
	BF in	% LMY	
	0.43	65.8	

AOD	BW	AWW	AYW	WPDA	CE
7	96	895	1420	3.63	**

Remedy is a very complete individual with a strong outcross pedigree. His dam is a very good female with excellent feet and udder. The sire, 54S, has left us a strong group of calves in his first calf crop! 9U had a strong 2008 show season, including: Res. Peoples Choice Champion Craps Summer Tour; Autumn Legacy Champion Bull Calf, Olds, AB; Res. Junior Bull Calf Champion, Farmfair International; Int. Champion Bull Calf, Agribition. Excellent performance, combined with a AA for marbling and a whopping 19.5 in ribeye, and impressive Igenity profile, make Remedy an easy choice!

Igenity: Tenderness 4/10 Marbling 7/10 Quality Grade 6/10
 Yield Grade 7/10 Ribeye 4/10

Owned by Corner Creek Angus and Nathan Jensen



Remedy's dam

Lazy MC Lookout 37U

CBM 37U February 16 2008 1466919

O C C LEGEND 616L
B C LOOKOUT 7024
 GIBBET HILL MIGNONNE E37

LAZY MC WORLDWIDE 5K
RED LAZY MC STAR 185M
 RED LAZY MC STAR 100J

EPDS	BW	WW	YW
	0.6	34	58
	Milk	TM	
CARCASS	14	31	
	MARB	REA in ²	
	AA	12.0	
	BF in	% LMY	
	0.22	64.0	

AOD	BW	AWW	AYW	WPDA	CE
6	89	644	1169	2.93	***

Here is our heifer bull for 2009. Maternal brother to Cowboy Cut. A top maternal pedigree with dams that are phenotypically model Angus females! Excellent carcass data and Igenity profile, including a 10/10 for tenderness! We are looking forward to the style, structure, and maternal punch 37U will add.

Igenity: Tenderness 10/10 Marbling 7/10 Quality Grade 7/10
 Yield Grade 7/10 Ribeye 4/10



Cowboy Cut and Lookout's dam

Red Lazy MC Cowboy Cut 26U

CBM 26U February 10 2008 1441140

RED LAZY MC SMASH 41N
RED LAZY MC STOUT 30S
 RED LAZY MC SCYTHIA 78N

LAZY MC WORLDWIDE 5K
RED LAZY MC STAR 185M
 RED LAZY MC STAR 100J

EPDS	BW	WW	YW
	1.5	32	56
	Milk	TM	
CARCASS	22	38	
	MARB	REA in ²	
	A+	16.15	
	BF in	% LMY	
	0.39	62.5	

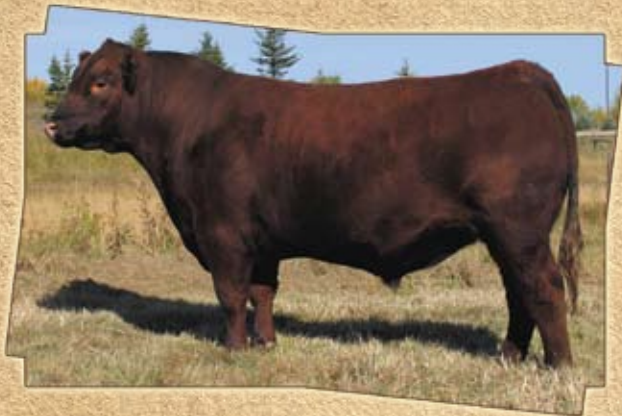
AOD	BW	AWW	AYW	WPDA	CE
6	90	928	1428	3.67	**

Cowboy Cut is one of 185M's best efforts. An excellent cow family and numerous bull sale high sellers in his background! The sire, Stout 30S, is one of our strongest sire groups: moderate at birth with unequalled phenotype and muscle shape. Our #2 ribeye bull at 16.15 in, and solid Igenity profile just add to this bull's value! He had a very impressive 2008 show season including: AJAA & CJAA Shows, Bull Calf Champion; "Summer Sizzler" Gold Show Res. Grand Champion Bull; Peoples Choice Champion Bull, Craps Summer Tour; Jr. Bull Calf Champion, Farmfair International; Legends of the Fall Red Angus Champion.

This young sire is an exciting addition to our herdsire lineup!
 Igenity: Tenderness 7/10 Marbling 9/10 Quality Grade 9/10
 Yield Grade 7/10 Ribeye 4/10

Owned with Bar EL Angus

Working at Stewart Cattle Co.



Red U-2 Big League 7136T

DUA 7136T 1388544 20 January 2075

RED LCC MAJOR LEAGUE A502M
RED U-2 BIG LEAGUE 544R
 RED U-2 ANEXA 09E

EPDS	BW	WW	YW
	0.3	34	57
	Milk	TM	
	16	33	

RED BJR RAMBLER 5162
RED STEWART PINOLA 1L
 RED STEWART PINOLA 2'99

AOD	BW	AWW	AYW	Y.SC	CE
6	84	770	1461	39	***

Red U-2 Big League 7136T was the number one marbling bull scanned this spring at U-2 at 5.35 (AAA). His dam came from our estate dispersal of '04 where the Pinola cow family averaged \$4,100.00 on seven head. Her first daughter to sell brought \$5,500.00 to WCC. She carries a sterling tabulation of great sires including Zama Pine 37S, Premier Patriot 16, Rambler 5162 and Towaw Matrix 19D. This Pinola cow family has beautiful udders. 35F is now a donor cow for Maple Dale farms in Ontario. His grand dam 2J was a \$5000.00 1/2 interest purchase by Estancia Silerio of Mexico. His sire Big League 544R was the high selling bull of '06 at \$21,000.00 to Ter-Ron Farms. 544R is from the most prolific cow family at Ungers - the Anexas. He was just named Reserve Sr. Yearling bull at Farmfair 2008. So far he has shown exceptional calving ease with progeny being similar in type. We look forward to continued heavy use of this young up and comer! Co-owned with Rainbow Red Angus

Red SCNJ Master 14U

RED YY 23L TOPPER 408D
 RED YY RED KNIGHT 640F
 RED TOP GOLDIE 40U

RED STEWART PATHFINDER 5L
 RED STEWART PATRICIA 306N
 RED STEWART MS PATRIOT 52H

EPDS	BW	WW	YW
	1.1	32	52
CARCASS	Milk	TM	
	18	34	
	MARB	REA in ²	
	A	13.48	
	BF in	% LMY	
	0.18	65.0	

AOD	BW	AWW	AYW	WPDA	CE
5	72	684	1205	3.10	***

One of the most complete and useful calves raised at Stewarts in a long time. Master is the result of a shared flush on the great donor Red Stewart Patricia 306N and the famed YY Knight 640F bull with Nathan Jensen. Depth, dimension, and disposition best describe 14U. Master posted our largest rib eye at 1.2 sq inches/100 lbs. He also achieved an outstanding 65% LMY. This bull moves like a cat with excellent head carriage, superb feet and legs, and a great set of nuts. He will be used on both heifers and cows to add muscle, improve udders, and maintain an ideal cow frame and weight.



For semen inquiries contact Nathan Jensen

Red Leachman End Cut 1383G

RED LMAN NONE BETTER 9604
 RED LCHMN NONE HEAVIER1127D
 RED LEACHMAN PRILARK RED

EPDS	BW	WW	YW
	4.7	42	67
	Milk	TM	
	21	42	

BUF CRK DYNAMO 2108
 RED PARK VICTORIA C233
 RED BUF CRK MINOLA 2330

BW	AWW	AYW
98	793	1247

We are excited to have acquired the balance of all exportable semen on End Cut. He is a powerful sire who passes on exceptional phenotype and muscle expression in a moderate package with above average scrotal development. His daughters have beautiful udders and with strong dark feet. End Cut ranks in the top 10% for WW and top 15% for YW. His milk is in the top 10% of the breed as well giving him a 41 for Total Maternal. He is the son of the famous Ludvigson donor cow, Park Victoria C233 who records 3 WR @ 111 and 3 YR @ 105. To date his calves have all shown extra power and dimension without compromising calving ease. They have dark red coats, excellent vigor and are consistent in type.



For semen inquiries contact Stewart Cattle Co. Semen is limited!

is in the top 10% of the breed as well giving him a 41 for Total Maternal. He is the son of the famous Ludvigson donor cow, Park Victoria C233 who records 3 WR @ 111 and 3 YR @ 105. To date his calves have all shown extra power and dimension without compromising calving ease. They have dark red coats, excellent vigor and are consistent in type.



RBC Supreme Champion



Red Lazy MC Bess 12S and Sparkle 2U

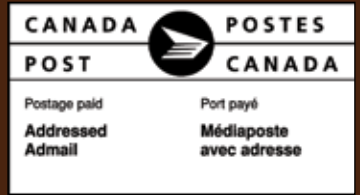
Canadian Western Agribition RBC Supreme Champion Female and
2008 Canadian Angus Association Show Female of the Year

Cow's Sire: Red Lazy MC Smash 41N / Calf's Sire: Red Lazy MC Gridiron 66S

Owned with Corner Creek Angus. Thank you for your confidence!



LMB Communications
53227 Hwy 21
Sherwood Park, AB
T8A 4V1



LAZY MC ANGUS STEWART CATTLE COMPANY NJC CATTLE CO. QUORN ANGUS

Signature XIII Series

RED & BLACK ANGUS BULL SALE

Covers by *Angela*

catalogue produced by:
 lmb.communications